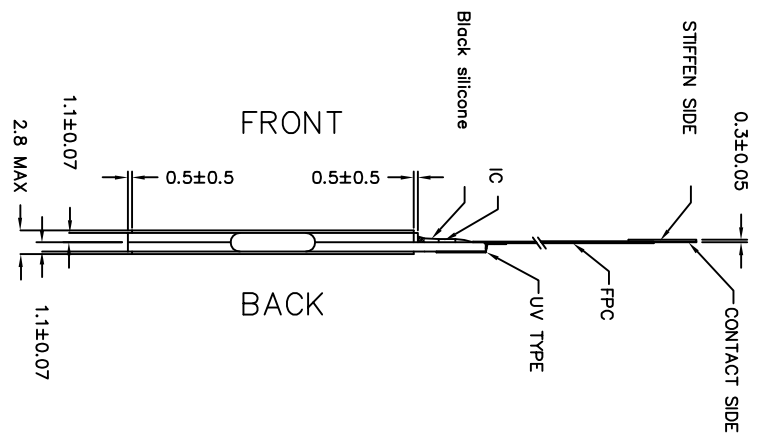
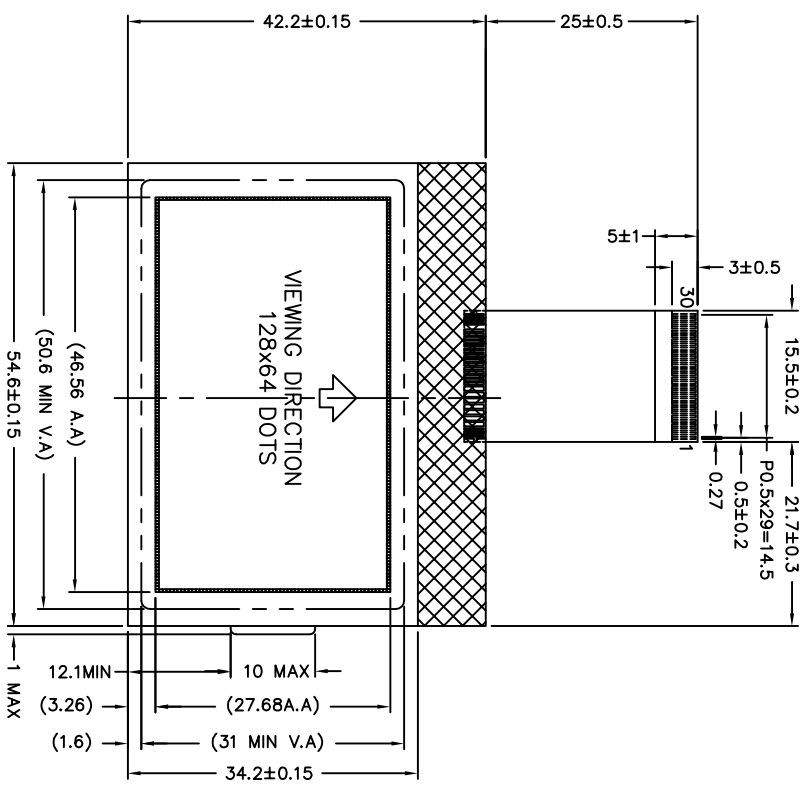
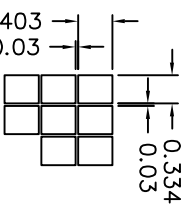


REV	REVISION RECORD	APPROVED
A	First Issue	
B	Add Backlight CIRCUIT	
C	Change LCD thickness	



PIN	SYMBOL	PIN	SYMBOL	PIN	SYMBOL
1	NC	11	VDD(3.0V)	21	DO/SCK
2	NC	12	BM1	22	WR1
3	NC	13	BM0	23	WR0
4	NC	14	D7	24	CD
5	Vout	15	D6	25	RST
6	VB0+	16	D5	26	/CS
7	VB0-	17	D4	27	NC
8	VB1-	18	D3/SDA	28	NC
9	VB1+	19	D2	29	NC
10	VSS	20	D1	30	NC



DETAIL FOR DOTS
SCALE: 10:1

NOTES:

1. Display type: STN/Gray
2. Viewing direction: 6 O'CLOCK
3. Drive method: 1/65DUTY 1/9BIAS
4. Polarizer mode: Transflective/Positive
5. LCD drive voltage: 10.2V
6. Operation temperature: -20 °C ~ +70 °C
7. Storage temperature: -30 °C ~ +80 °C
8. Driver/Controller IC: UC1601
9. Logic power supply voltage: 3.0V
10. ROHS must be complied

General	Dimension	±
0.5	0.05	0.1
1	0.05	0.1
2	0.05	0.1
3	0.05	0.1
4	0.05	0.1
5	0.05	0.1
6	0.05	0.1
7	0.05	0.1
8	0.05	0.1
9	0.05	0.1
10	0.05	0.1
11	0.05	0.1
12	0.05	0.1
13	0.05	0.1
14	0.05	0.1
15	0.05	0.1
16	0.05	0.1
17	0.05	0.1
18	0.05	0.1
19	0.05	0.1
20	0.05	0.1
21	0.05	0.1
22	0.05	0.1
23	0.05	0.1
24	0.05	0.1
25	0.05	0.1
26	0.05	0.1
27	0.05	0.1
28	0.05	0.1
29	0.05	0.1
30	0.05	0.1
31	0.05	0.1
32	0.05	0.1
33	0.05	0.1
34	0.05	0.1
35	0.05	0.1
36	0.05	0.1
37	0.05	0.1
38	0.05	0.1
39	0.05	0.1
40	0.05	0.1

ARROW TECH

VERSION	DATE	MODEL NAME
A	2009.08.26	ATG1286420S-GTE1GD

SCALE	UNIT	TITLE
1/1	mm	Outline

APPROVED	CHECKED	DRAWN	FILE NAME

ARROW TECH

LED BACKLIGHT
FOR LCD DISPLAY

P058A-01
1286420S-C7E1GDW

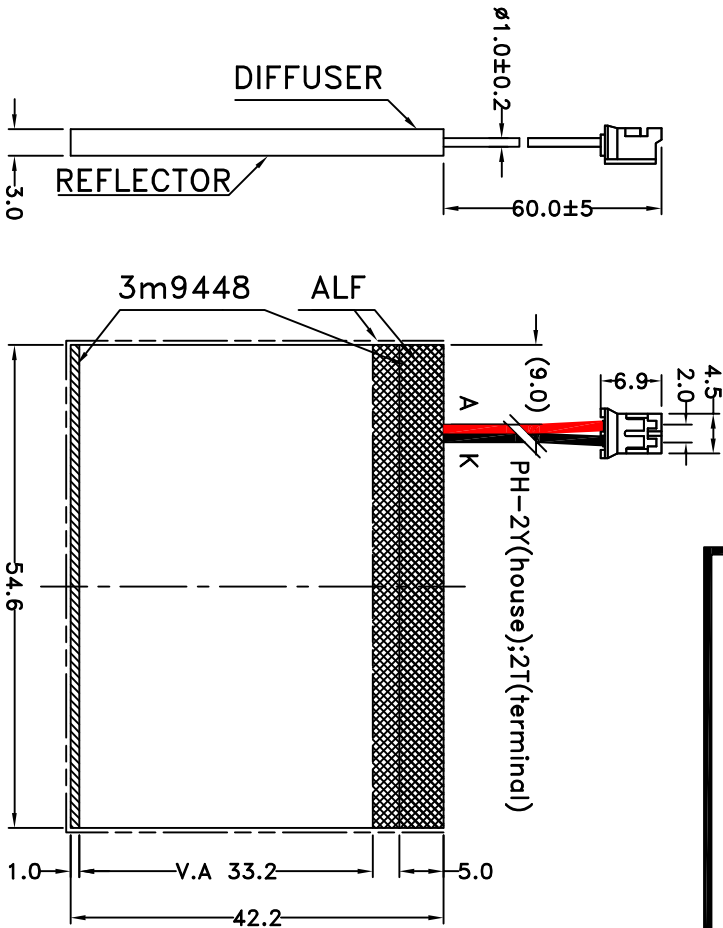
日期 Date:
2009.8.26



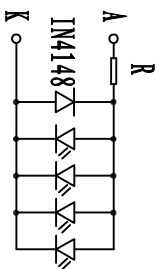
制程符合ROHS要求

备注:
1. 此产品为环保无铅。
2. 未注圆角R0.7。

1. 结构尺寸 MECHANICAL OUTLINE (未注尺寸公差 Unspecified Tolerances is: .xx ± 0.2 开模样品) .xx ± 0.2



4. 电路图:

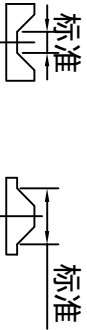


2. 保存和焊接条件 STORAGE & SOLDERING CONDITIONS:

Store with care. Storing the units in bad condition will cause the reflector sheet and decrease it's adhesive power. Storage. The products under the condition: temperature (25°C±10°C) and humidity (65%RH±20%RH) our recommendation.

- 注意保存 .保存条件不好时 ,会降低反光膜 (9) 散膜)与导光片 (反射壳) 的粘附力 .
- 推荐保存条件为 : 温度 25°C±10°C 湿度 65%RH±20%RH

3. 尺寸测量法: 标准



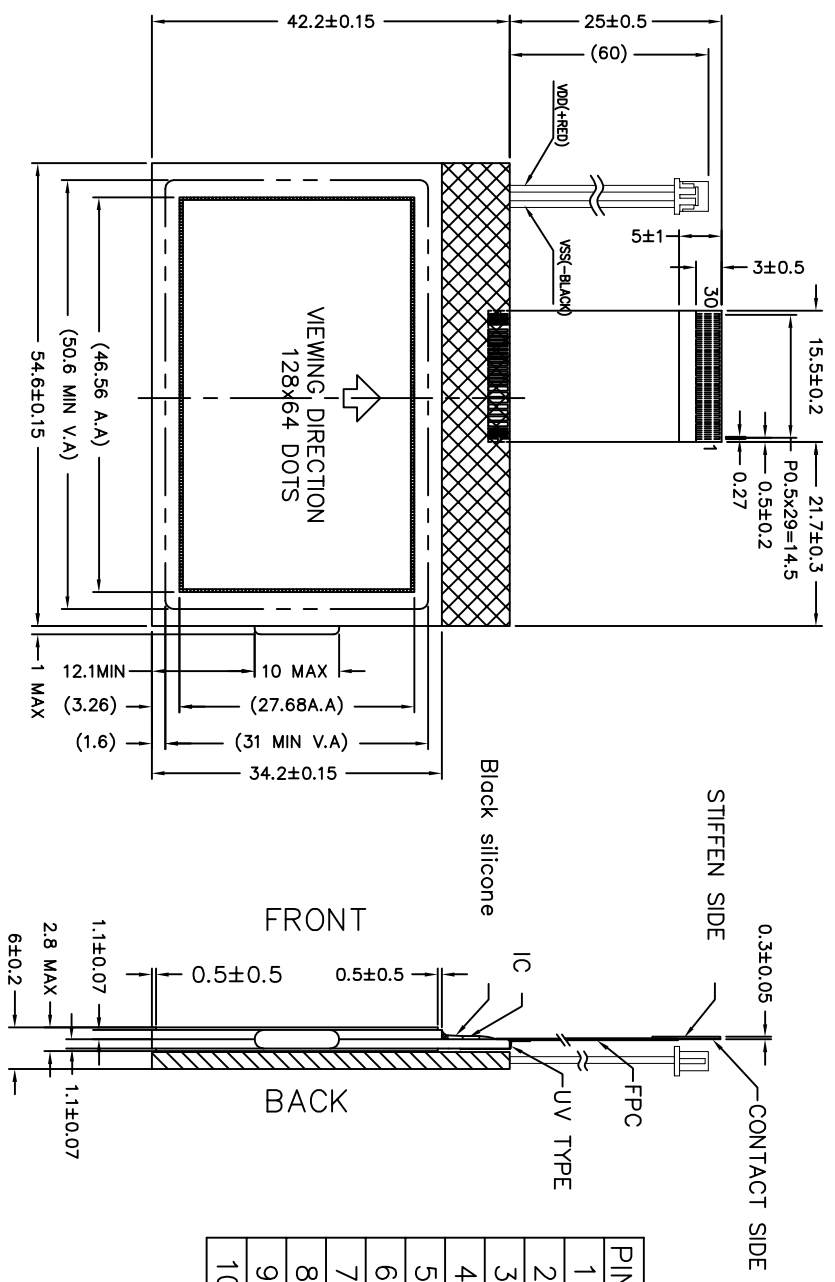
Item	Symbol	min.	typ.	max.	Unit	Condition
正向电压	V	3.1	3.3	3.5	V	If= 60 mA
均匀性	ΔL	75			%	
亮度	Lv		--		cd/m ²	
色度	X Y		-- --			

ISSUE 标识	AMENDMENT 改正内容	Date: 日期	DESIGN: 设计
			CHECKED: 检查
			COUNTERSIGN: 会签
			APPROVED: 批准

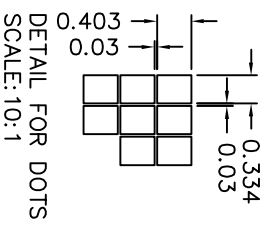
Drawing No: P058.2.01
图号:

REV: 版本
AO

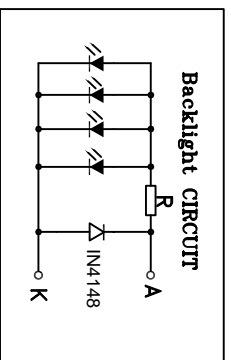
REV	REVISION RECORD	APPROVED
A	First Issue	
B	Add Backlight CIRCUIT	
C	Change LCD thickness	
D	Change BACKLIGHT VOLTAGE	



PIN	SYMBOL	PIN	SYMBOL	PIN	SYMBOL
1	NC	11	VDD(3.0V)	21	DO/SCK
2	NC	12	BM1	22	WR1
3	NC	13	BMO	23	WR0
4	NC	14	D7	24	CD
5	Vout	15	D6	25	RST
6	VB0+	16	D5	26	/CS
7	VB0-	17	D4	27	NC
8	VB1-	18	D3/SDA	28	NC
9	VB1+	19	D2	29	NC
10	VSS	20	D1	30	NC



DETAIL FOR DOTS
SCALE: 10:1



Backlight circuit

NOTES:

1. Display type: STN/Gray
2. Viewing direction: 6 O'CLOCK
3. Drive method: 1/65DUTY 1/9BIAS
4. Polarizer mode: Transflective/Positive
5. LCD drive voltage: 10.2V
6. Operation temperature: -20 ℃~+70 ℃
7. Storage temperature: -30 ℃~+80 ℃
8. Driver/Controller IC: UC1601
9. Logic power supply voltage: 3.0V
10. Backlight: White/Vf=3.3V If=15*4=60mA
11. ROHS must be complied

General	Moisture ±
0.5	0.1
1	0.1
2	0.1
3	0.1
4	0.2
5-10	0.1
11-20	0.1
21-30	0.2
31-40	0.3
41-50	0.4
51-60	0.5
61-70	0.6
71-80	0.7
81-90	0.8
91-100	0.8



VERSION	DATE	MODEL NAME
A	2009.08.26	ATG1286420S-GTE1GDW
SCALE	UNIT	TITLE
1/1	mm	Outline
APPROVED	CHECKED	FILE NAME